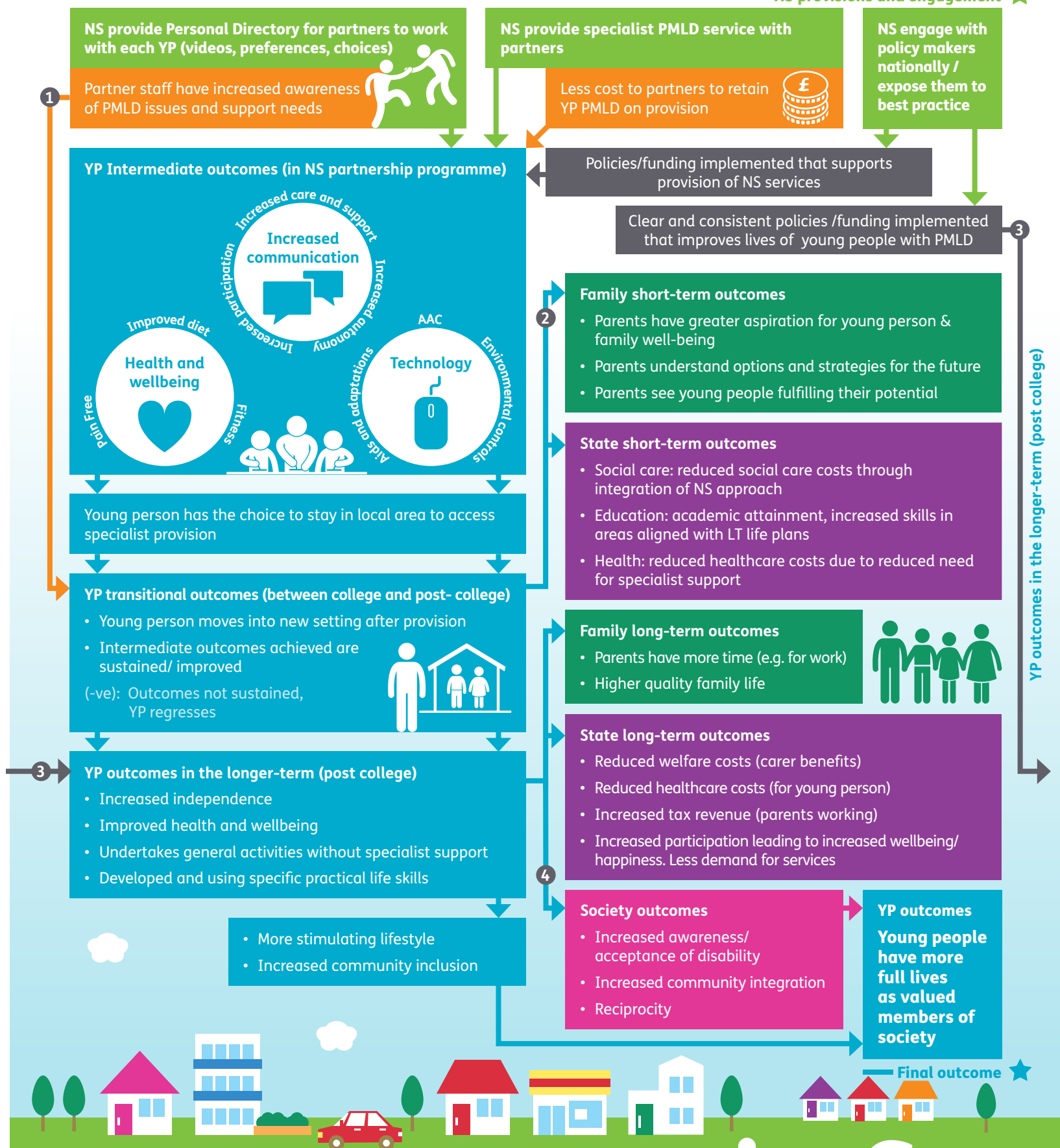


# Young Person (YP) PMLD Service – Theory of Change

NS provisions and engagement 



YP outcomes in the longer-term (post college)

## Assumptions

- Staff in post-college settings have the time/capacity to use NS's personal directory for former students.
- A proportion of PMLD students that are supported shift from requiring 1-1 care/support to only requiring 1-2 or 1-3 care/support.
- Frontline service providers in post-college settings can effectively use resources made available by policy changes at local and national levels.
- Increased presence of YP PMLD in 'mainstream' settings will result in increased acceptance.



**National Star**  
Realising the aspirations of people with disabilities

Developed by CAN Invest, 2015  
**CAN Invest**  
Driving growth in social enterprise